

2014 NEWSLETTER

Created by the Wright Institute Los Angeles Alumni Association for the WILA Community

Endings and Beginnings

By Allen & Michele



On September 7th WILA celebrated its 40th birthday. Our guest of honor was none other than **Myra Pomerantz**, who recently retired from her last major Wright Institute position. It was a great party and such a pleasure to honor Myra, whose twenty-one-year WILA career spanned an internship, postdoctoral fellowship, five years as Clinical Director, Core Faculty, and finally a stint as Director of Special Projects. Myra has been a devoted member of the WILA community who cares deeply about our organization and, most importantly, our students. She is what everyone hopes for in a colleague and friend: committed, loving, and generous.

We are excited to announce that the newest addition to our Core Faculty is **Leigh Tobias**. Leigh is a WILA alum, a graduate psychoanalyst, and currently the President of The Psychoanalytic Center of California (PCC). Prior to joining the Core Faculty, Leigh was an esteemed WILA instructor and delegated supervisor. She is an outstanding, highly accomplished psychoanalyst and teacher. We are delighted to welcome Leigh to her new position at WILA.



Terry Simpson (class of 2014) has recently taken a position as Director of Practice Development at WILA. He is working creatively to strengthen our marketing and outreach efforts. As a therapist and successful business owner, Terry is uniquely positioned to help facilitate WILA's engagement with the coming health care environment.

Finally, we would like to introduce you to our **new 2014-2015 class**. We selected twelve bright and enthusiastic Psychology Interns and Postgraduate Fellows. WILA continues to be one of the most sought after training programs in Los Angeles.



Back Row: Maryam Vadjed Samiei, Lauren Moses, Jody Churko, Michele Gomes (Clinical Director), Andrea Kane, Ilana Bar-Din Giannini, Megan Wilhite. *Front Row:* Vala Kondo-Legan, Laura Ruaro, Veronika Berger, Rebecca Rodriguez, Amy Martinez, Richard Caro

Notes from the President

By Max Feirstein, WILA Alumni Association President

I'm honored to serve as your current president of the Wright Institute Los Angeles Alumni Association. As president, my goal is to bring Alumni from all generations and our supporters closer, through sponsored events and online and in-person connections. In this way, we will strengthen WILA and the vital community that surrounds it.

WILA is a special place. It prepared me with exceptional training to do the work I do. Wherever I go, I meet other alumni who are making significant contributions to the field. My heart is warmed when I hear the passion and love other graduates exude. I, too, share this strong pride and love of WILA and its current, vital work.

The Alumni Association sponsors social events, continuing education workshops, webpage listings of members and more. In line with my vision for the Alumni association, we will be expanding our use of technology to keep you connected to us, and plan more frequent announcements, newsletters and new alumni-spotlights that will illuminate the exciting things alumni are doing in their practices and in the field. We'll also be launching a mentorship program to connect alumni with current interns and post doctoral candidates. Through these and other initiatives, we hope to build on and expand the important work that WILA and the Alumni Association provides. Please feel free to connect directly with me at drfeirstein@gmail.com or 310-773-0010. I look forward to working with all of you in this important mission.

Practice Development Seminar

Sponsored by the WILA Alumni Association



The Practice Development Seminar was a tremendous success thanks to presenters Dana Kiesel, Ph.D., Stephen Phillips, J.D., Psy.D., Maya Schlanger, Ph.D. and Peter Rath, Psy.D.

The event, one of many the Alumni Association has planned for the WILA community, was well-received by WILA trainees and recent graduates.

New Alumni Gathering

By Lilly Gallay, Alumni Association Board Member



Class of 2014 members Zachary Wheeler, James Harris, Lilly Gallay, Ulla Grunnet, and Melissa Jacobs.

After receiving their Certificates in Psychoanalytic Psychotherapy and cleaning out their desks, the latest group of WILA trainees to join the alumni ranks weren't ready to say goodbye to each other quite yet. An informal gathering to mark the end of their WILA era was held on October 10th at the Avalon Hotel, which all agreed should become a regular event.

Save the Date!

Wright Institute Los Angeles

is co-sponsoring a presentation with

The New Center for Psychoanalysis

Individualities: How Personality Differences Matter for Psychotherapy

Nancy McWilliams, Ph.D., ABPP

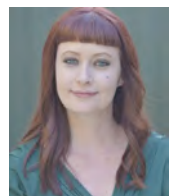
March 7, 2015

at The Olympic Collection
11301 W. Olympic Blvd., #204, Los Angeles, CA 90064

6 hours of CE credit will be offered

For more information call 310-277-2796
or email events@wila.org

*The Alumni Association newsletter
is edited by Lilly Gallay, Psy.D., Class of 2014*



THE WILA ALUMNI ASSOCIATION is a valued partner of Wright Institute Los Angeles. Members are active in fundraising, sponsoring CE programs, and honoring WILA trainees and graduates. The Association also publishes the WILA newsletter and meets for social events. To join or for more information contact alumni@wila.org

SUPPORT WILA

*Help our programs with
a tax-deductible gift to our
Annual Support Campaign*

